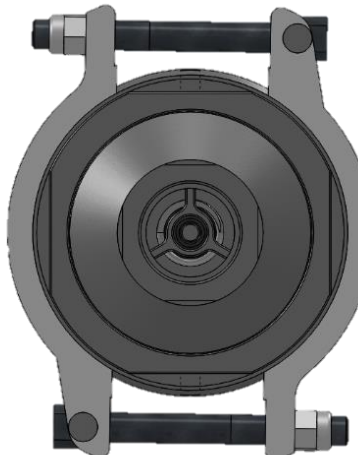
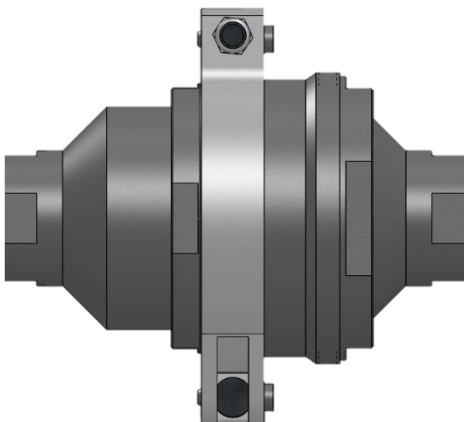
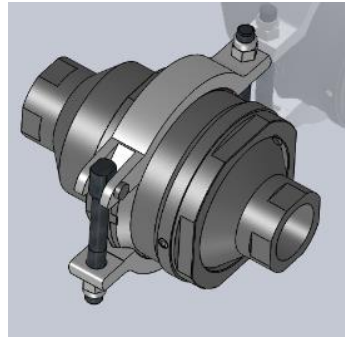


# HBA Breakaway

The HBA Breakaway is engineered as a safety device that can help prevent damage to pipes and accidental spills should a truck or rail car accidentally pull away without disconnecting. The HBA breakaway family is designed to ASME B31.3 standards and is manufactured to ISO standards

## Specifications

- Connections: FNPT or Butt Weld
- Sizes: 1", 2", 3"
- Max. Pressure: 360 P (2.5 Mpa) @ -20 to 200°F (-29 to 93°C).
- Material: 316 Stainless Steel
- Seals: Fluorocarbon, Aflas, EPDM, PTFE, Kalrez®, Chemraz®,



ORDERING SPECIFICATIONS	
<b>HBA-30-1N1N-A-3434-D-V7</b>	
HBA	Hiltap Breakaway Fittings
30	<b>Nominal Size</b>
	10 1"
	20 2"
	30 3"
1	<b>BA Sleeve End Connection</b>
	1 Female NPT
	3 Butt Weld
N	<b>BA Sleeve Coating</b>
N	None
1	<b>Male End Connection</b>
	1 Female
	3 Butt Weld
N	<b>Male End Coating</b>
N	None
A	<b>Material Wetted Parts</b>
A	A479-316/316L (SA)
3434	<b>Hiltap Drawing Package Code</b>
D	<b>Sleeve Material if Different from Wetted Parts</b>
V7	<b>O-Ring Material</b>
	V7 Viton 75D
	A8 AFLAS 80 Durometer
	E7 EPDM 70 D
	K1 Kalrez® 4079
	C5 Chemraz® 541
	T1 PTFE