

## AHR430M-9-1 Hose End Fitting

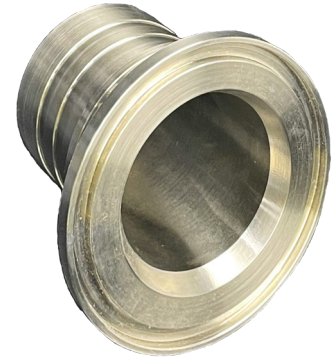
Liquip supply a hose end fitting for use on a range of Liquip drum and cartwheel style hosereels.

The AHR430M-9-1 accepts 50mm ID hose and is secured with hose tail clamping ferrules such as the Elaflex SC50 Spannloc fitting.

The mating half of the hose end fitting is secured to the compatible Liquip gooseneck using a O-ring and tri-clover style clamp.

The design of the AHR430M-9-1 allows users to easily install and remove the Spannloc clamp for serviceability without the need for additional tools.

A Stainless Steel design ensures the hose end can be used in a range of environments and is suitable for both commercial and military aviation refuelling applications.



The AHR430M-9-1 Hose End Fitting

### Key Features

- Stainless Steel 304 construction for aviation fuel compatibility.
- Easy to install and remove from Liquip's mating gooseneck with tri-clover style clamp.
- Hose ends and Liquip's range of hosereels are supported through Liquip's distribution network.

### Ordering Information

- **AHR430M-9-1:** HOSE END SUIT HOSEREEL QUICK ACTING COUPLING, 50mm HOSETAIL

### Associated Equipment

- **AHR251-BBHL:** Hosereel suit 50mm hose & hydraulic rewind, no cheek plate (Left Hand wind).
- **AHR251-BBHR:** Hosereel suit 50mm hose & hydraulic rewind, no cheek plate (Right Hand wind).
- **AHR5030AHRX:** Hose Assembly c/w clamps and fittings, suits AHR251-BBHx hosereels.

### Technical Information

Max allowable working pressure	Up to 2,100 kPa
Weight	350g
Materials	Stainless Steel 304
Hose Interface	Spannloc
Gooseneck Interface	Tri-clamp

